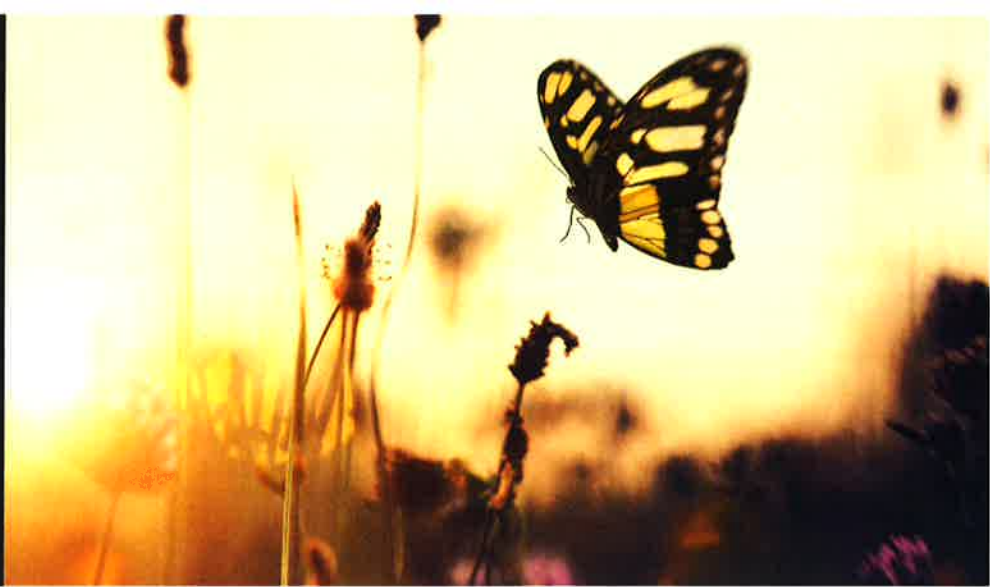




CONESTOGA

SCHOOL OF HEALTH
& LIFE SCIENCES AND
COMMUNITY SERVICES



NEW in Brantford this fall: Palliative/End-of-Life Care Certificate Programs

The School of Health & Life Sciences and Community Services at Conestoga is delighted to be working with Stedman Hospice on the collaborative delivery of two new programs specializing in palliative/end-of-life care. These two certificate programs will provide graduates with the capabilities to excel as leaders in the delivery of integrated and evidence-informed hospice palliative care, including pain and symptom management, care of the dying person and family and optimizing interdisciplinary collaborative care teams.

ENHANCED PERSONAL SUPPORT WORKER – PALLIATIVE/END-OF-LIFE CARE #1352

Course Code	Course Name	Duration
PSW1570	Introduction to Palliative/End-of-Life Care	21 hours
PSW1575	Life-Limiting Illness Across the Lifespan	21 hours
PSW1580	Pain and Symptom Management in the Context of Life-Limiting Illness	21 hours
PSW1585	Supportive Care for the Person and Family	21 hours
PSW1590	Medications at End-of-Life	21 hours
HEAL1810	Mental Health First Aid	12 hours
HEAL1895	Gentle Persuasive Approaches	8 hours

Total 125 hours

REGISTERED NURSE – A PALLIATIVE APPROACH TO CARE #1353

Course Code	Course Name	Duration
NURS8181	Trends and Issues in Palliative/End-of-Life Care	18 hours
NURS8182	An Appropriate Response to the Care of the Dying Person and Family	18 hours
NURS8183	Trajectory of Life-Limiting Illness Across the Lifespan	18 hours
NURS8184	Symptom Assessment and Management in the Context of Life-Limiting Illness	18 hours
NURS8185	Pain Assessment and Management	18 hours
NURS8186	Care of the Person and Family	18 hours
NURS8187	The Art of Nursing in the Last Days	18 hours
NURS8188	Nursing Practice Excellence: Across the Domains	18 hours
NURS8191	Knowledge Integration Project	45 hours

Total 189 hours

PROGRAM DELIVERY SCHEDULES

ENHANCED PERSONAL SUPPORT WORKER - PALLIATIVE/END-OF-LIFE CARE #1352

Course Code	Date	Time
PSW1570	October 16, 2017	Online
	October 23, 2017	4:00 p.m. – 10:00 p.m.
	October 30, 2017	Online
	November 6, 2017	4:00 p.m. – 10:00 p.m.
	November 13, 2017	4:00 p.m. – 10:00 p.m.
PSW1575	November 20, 2017	Online
	November 27, 2017	4:00 p.m. – 10:00 p.m.
	December 4, 2017	Online
	December 11, 2017	4:00 p.m. – 10:00 p.m.
	December 18, 2017	4:00 p.m. – 10:00 p.m.
PSW1580	January 8, 2018	Online
	January 15, 2018	4:00 p.m. – 10:00 p.m.
	January 22, 2018	Online
	January 29, 2018	4:00 p.m. – 10:00 p.m.
	February 5, 2018	4:00 p.m. – 10:00 p.m.
PSW1585	February 12, 2018	Online
	February 26, 2018	4:00 p.m. – 10:00 p.m.
	March 5, 2018	Online
	March 12, 2018	4:00 p.m. – 10:00 p.m.
	March 19, 2018	4:00 p.m. – 10:00 p.m.
PSW1590	March 26, 2018	Online
	April 2, 2018	4:00 p.m. – 10:00 p.m.
	April 9, 2018	Online
	April 16, 2018	4:00 p.m. – 10:00 p.m.
	April 23, 2018	4:00 p.m. – 10:00 p.m.

REGISTERED NURSE - A PALLIATIVE APPROACH TO CARE #1353

Course Code	Date	Time
NURS8181	October 5, 2017	9:00 a.m. – 4:00 p.m.
	October 12, 2017	9:00 a.m. – 4:00 p.m.
	October 19, 2017	9:00 a.m. – 4:00 p.m.
NURS8182	October 26, 2017	9:00 a.m. – 4:00 p.m.
	November 2, 2017	9:00 a.m. – 4:00 p.m.
	November 9, 2017	9:00 a.m. – 4:00 p.m.
NURS8183	November 16, 2017	9:00 a.m. – 4:00 p.m.
	November 23, 2017	9:00 a.m. – 4:00 p.m.
	November 30, 2017	9:00 a.m. – 4:00 p.m.
NURS8184	December 7, 2017	9:00 a.m. – 4:00 p.m.
	December 14, 2017	9:00 a.m. – 4:00 p.m.
	December 21, 2017	9:00 a.m. – 4:00 p.m.
NURS8185	January 4, 2018	9:00 a.m. – 4:00 p.m.
	January 11, 2018	9:00 a.m. – 4:00 p.m.
	January 18, 2018	9:00 a.m. – 4:00 p.m.
NURS8186	January 25, 2018	9:00 a.m. – 4:00 p.m.
	February 1, 2018	9:00 a.m. – 4:00 p.m.
	February 8, 2018	9:00 a.m. – 4:00 p.m.
NURS8187	February 15, 2018	9:00 a.m. – 4:00 p.m.
	February 22, 2018	9:00 a.m. – 4:00 p.m.
	March 1, 2018	9:00 a.m. – 4:00 p.m.
NURS8188	March 8, 2018	9:00 a.m. – 4:00 p.m.
	March 15, 2018	9:00 a.m. – 4:00 p.m.
	March 22, 2018	9:00 a.m. – 4:00 p.m.
NURS8191	March 29, 2018	9:00 a.m. – 4:00 p.m.
	April 5, 2018	9:00 a.m. – 4:00 p.m.
	April 12, 2018	9:00 a.m. – 4:00 p.m.
	April 19, 2018	9:00 a.m. – 4:00 p.m.
	April 26, 2018	9:00 a.m. – 4:00 p.m.

For more information, please contact:

Cheryl Moore, Executive Director,
Stedman Community Hospice
cmoore@stedmanhospice.ca
519-751-7096 ext. 2501

To register, please contact:

Kim Myre
kmyre@conestogac.on.ca
519-748-5220 ext. 3445

