



FULL TIME, PART TIME & CASUAL PSW POSITIONS Stedman Community Hospice

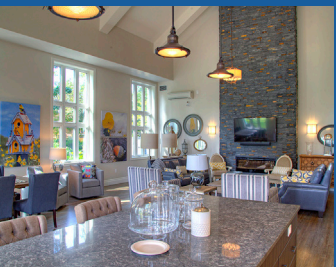
Stedman Community Hospice is looking for caring, compassionate healthcare professionals to join our team. Our 10-bed residence gives people who are living with a palliative diagnosis the opportunity to live with dignity and comfort in a place that feels like home.

The Personal Support Worker (PSW) is responsible for providing assistance with all activities of daily living, as well as providing end of life care to patients and their families. The PSW will foster an environment that is safe and home-like.



Essential Duties and Responsibilities:

- Provides direct care to the patient in collaboration with the RN according to the wishes of the patient.
- Ensures all patient rooms are tidy and high-touch surfaces are disinfected daily.
- Completes house laundry.
- Assists with light meal preparation and feeding when required.
- Assists patients requiring help to move from one area to another according to the determined safe method identified for that patient.
- Seeks out opportunities to spend time with the patients when no care is required, to assist the patient and their family members in telling their stories and sharing their journeys.
- Provides emotional support to patients and their families as appropriate.
- Provides guidance and support to Hospice Volunteers.
- Provides feedback and information during report and/or team meetings and assists with the writing of policies and procedures.



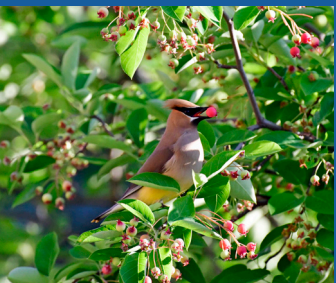
Qualifications:

- Personal Support Worker Certificate from an accredited program
- Minimum 1 year of PSW experience
- Experience in palliative care preferably in hospice or community environment
- Ability to work 12-hour shifts, weekdays, weekends, nights, and statutory holidays

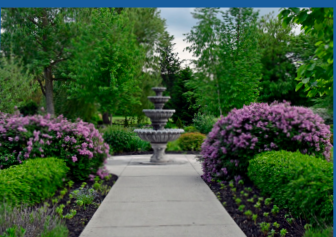


Stedman Community Hospice is part of the St. Joseph's Lifecare Centre Campus of Care, Brantford. We appreciate all responses, however, only candidates under consideration will be contacted.

St. Joseph's Lifecare Centre Brantford is an equal opportunity employer and strives for equity, inclusiveness, and diversity in all programs, facilities, and people. St. Joseph's Lifecare Centre Brantford is committed to creating a barrier-free, accessible organization, utilizing a collaborative approach in supporting persons with disabilities during recruitment, assessment, selection, hiring, and the ongoing employment life cycle.



Upon individual request, the Lifecare Centre will endeavor to remove any barrier to the employment lifecycle to accommodate those employees with disabilities. Should any employee require accommodation through the employment lifecycle, please contact Human Resources.



How to Apply

For more information, or to submit a resume and cover letter, please contact Human Resource via email: eowoso@sjltc.ca by 5 p.m. on Friday, July 1, 2022

About Brantford

Brantford, Ontario, is a progressive community located in Canada's economic heartland. Available to you, ours is a community of unique balance offering amazing urban and rural amenities, modern conveniences and natural features, and incredible indulgences and healthy alternatives. [Click here](#) to explore all that we have to offer.



Live Here



Work Here



Play Here



Study Here